

LOCATION MAP

not to scale



APPROXIMATE DISTANCES

Margao Market	5.5 km
Arlem Circle junction	2.0 km
Igreja de Mãe dos Pobres Church - Nuvem	2.8 km
Pandit Jawaharlal Nehru Stadium - Fatorda	3.3 km
Margao Railway Station	7.0 km
Dabolim Internaional Airport	24 km
Majorda Beach	8.3 km
Panjim city	30 km



Scan for Location

FOR BOOKINGS & ENQUIRIES PLEASE CONTACT

DHARMA ESTATES
K U R T A R K A R S

 Kurtarkar Towers, Malbhat, Margao - Goa 403601

 +91 832 - 2730545 | +91 832 - 2730243

 info@kurtarkar.com

Architects - AVISHKAR (Ar. Sameer & Ar. Binota Nadkarni) | Structural Consultant - Eng. Prakash Lawande

The information contained in this brochure is subject to change and cannot form part of a legal offer or contract

A LIFETIME OF
LUXURY



Premium four bedroom boutique Villas

A SIGNATURE PROJECT BY

DHARMA ESTATES
K U R T A R K A R S

A LIFETIME OF LUXURY



Welcome to **Casa del Sol** by Dharma Estates, an exceptional project featuring luxurious independent and row villas in picturesque Manora of Raia village in Salcete taluka, Goa. Each villa is thoughtfully designed with four spacious bedrooms, providing ample space for your family to thrive. With two dedicated car parkings per villa, you can enjoy the convenience and security that come with premium living. Nestled in close proximity to Margao municipal limits, **Casa del Sol** offers easy access to urban amenities while maintaining a tranquil, peaceful environment.

✍ Surrounded by lush greenery, **Casa del Sol** promises a serene and rejuvenating lifestyle away from the hustle and bustle. This peaceful location is perfect for those seeking a harmonious blend of modern living and natural beauty.

✍ Meticulously planned spacious and free flowing layout and architecture to reflect both luxury and practicality, ensuring every detail meets the highest standards. Embrace the true essence of luxury living with **Casa del Sol**, where comfort, style, and tranquility converge to create your perfect home.

LIFESTYLE AMENITIES



Vaastu Compliant



Gated Complex



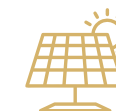
24 hrs Security



Covered Parking for 2 cars



Private Landscape Garden



Solar water heating provision



Electrical vehicle charging point in the garage



Provision for Inverter Washing machine & Dishwasher



CCTV surveillance



WIFI provision



Video door phone



Hydro-neumatic Pressure system



INDEPENDENT VILLA

THE EPITOME OF
PRIVACY & LUXURY



illustration is artist's impression and cannot be held responsible for any inaccuracy

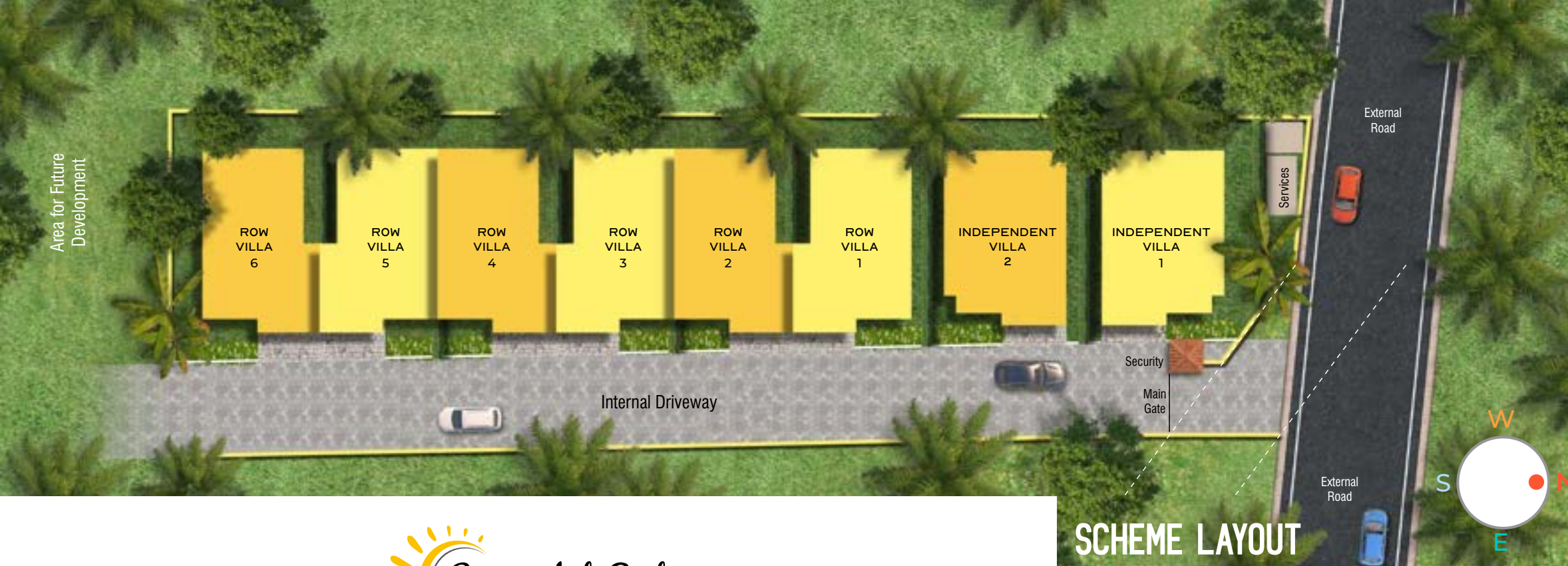


CAREFULLY DESIGNED FOR
PEACE & SERENITY
ROW VILLA



illustration is artist's impression and cannot be held responsible for any inaccuracy

Area for Future Development



PREMIUM SPECIFICATIONS

STRUCTURE: RCC structure with sloping roof.

FLOORING: All rooms, living & kitchen with double charged vitrified tiles. Full height glazed tiles dado in toilets.

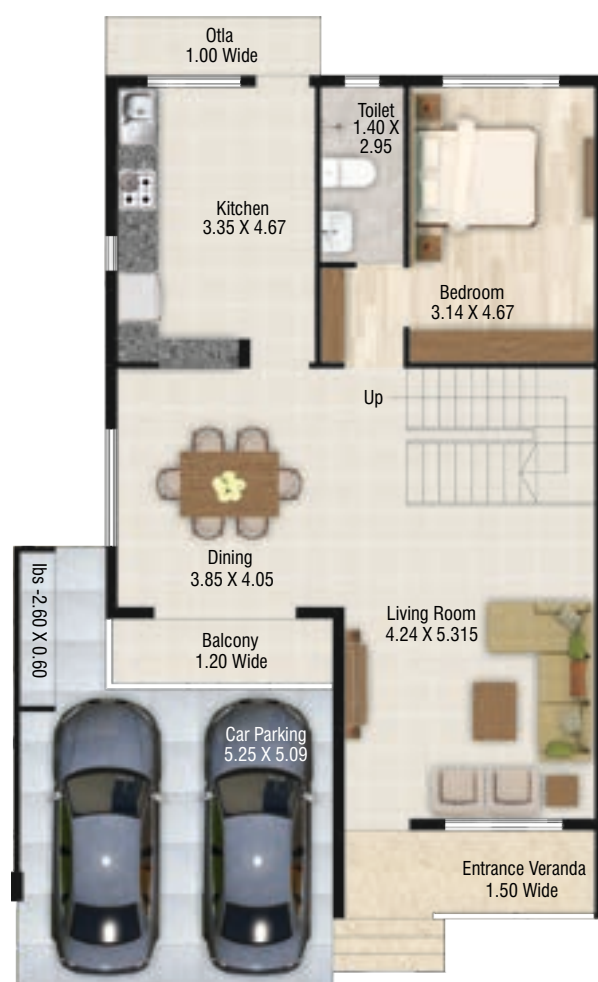
DOOR/WINDOW: All Doors will have teakwood frames except toilet doors will have granite frames. Main door of teak wood and other doors with melamine polished teak veneer. Heavy guage premium quality aluminium anodized windows. All windows/ ventilators to have Marble/ Granite sills internally. Grills for windows.

KITCHEN: Granite platform with stainless steel sink. Ceramic tiles dado 0.6m above platform.

TOILETS: Premium quality bathroom fittings. Toilets with EWC. All internal concealed plumbing in rust free pipes and fittings. wall hung wash basin and bathroom with hot/cold arrangement.

WATER SUPPLY: Independent underground sump with overhead tank 1000 lits capacity for Row villas.

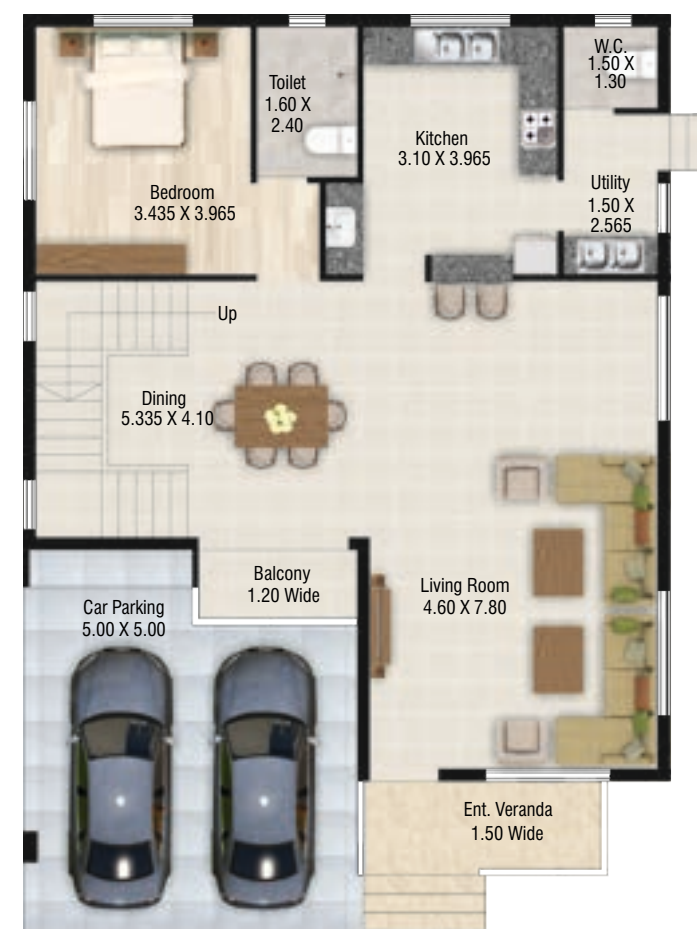
DECOR: Internally plastic emulsion paint, externally finished with emulsion paint. All ceilings painted with oil bound distemper.



GROUND FLOOR PLAN



FIRST FLOOR PLAN



GROUND FLOOR PLAN



FIRST FLOOR PLAN

ROW VILLA

INDEPENDENT VILLA